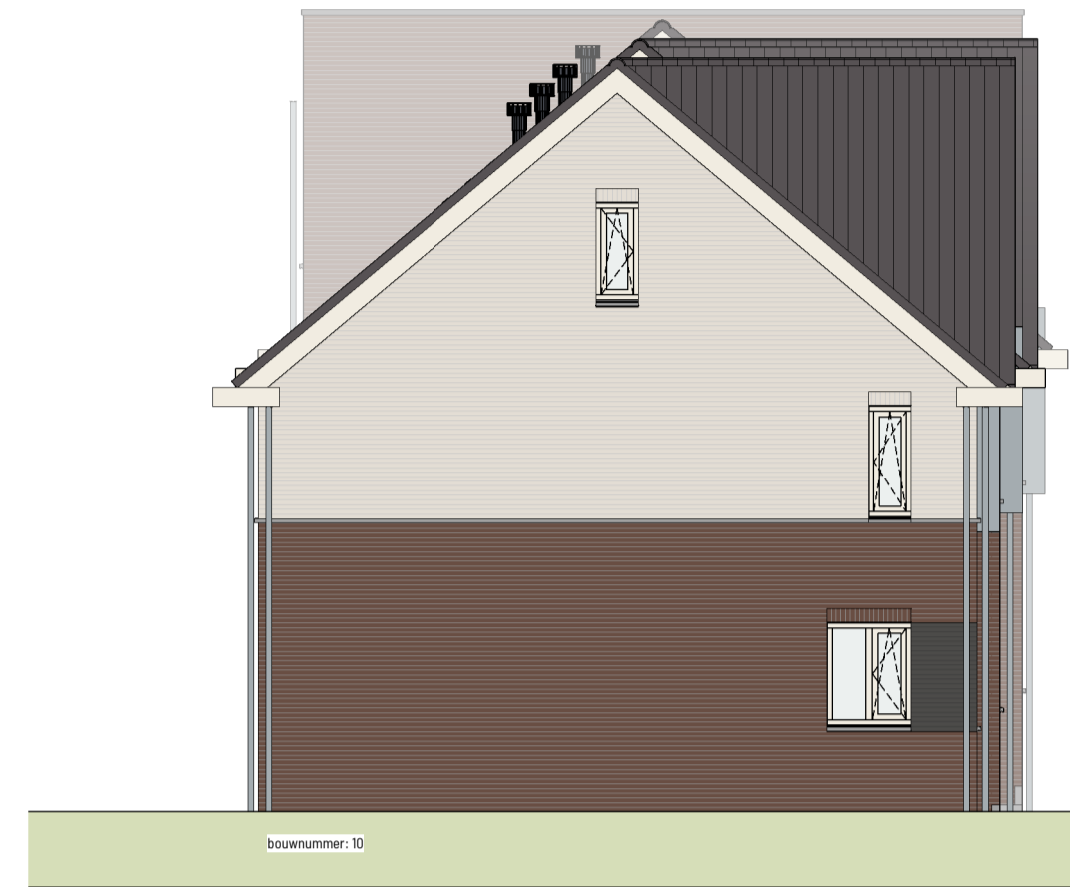
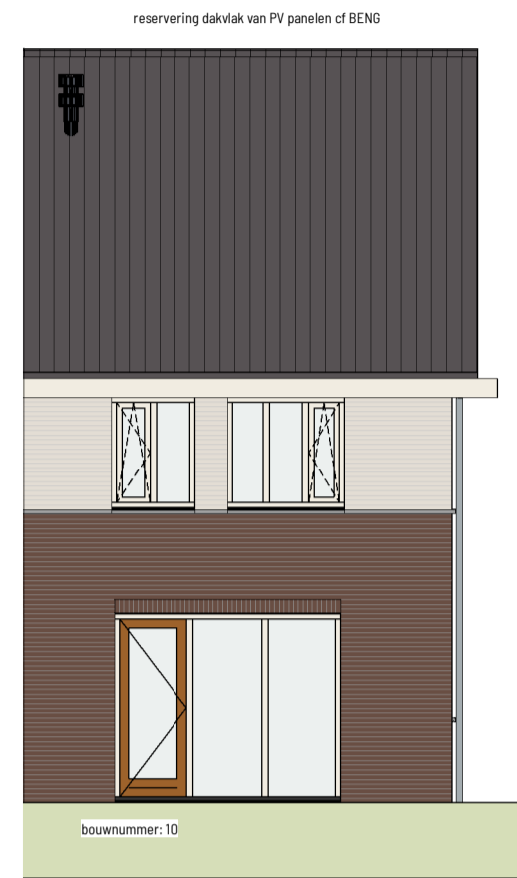




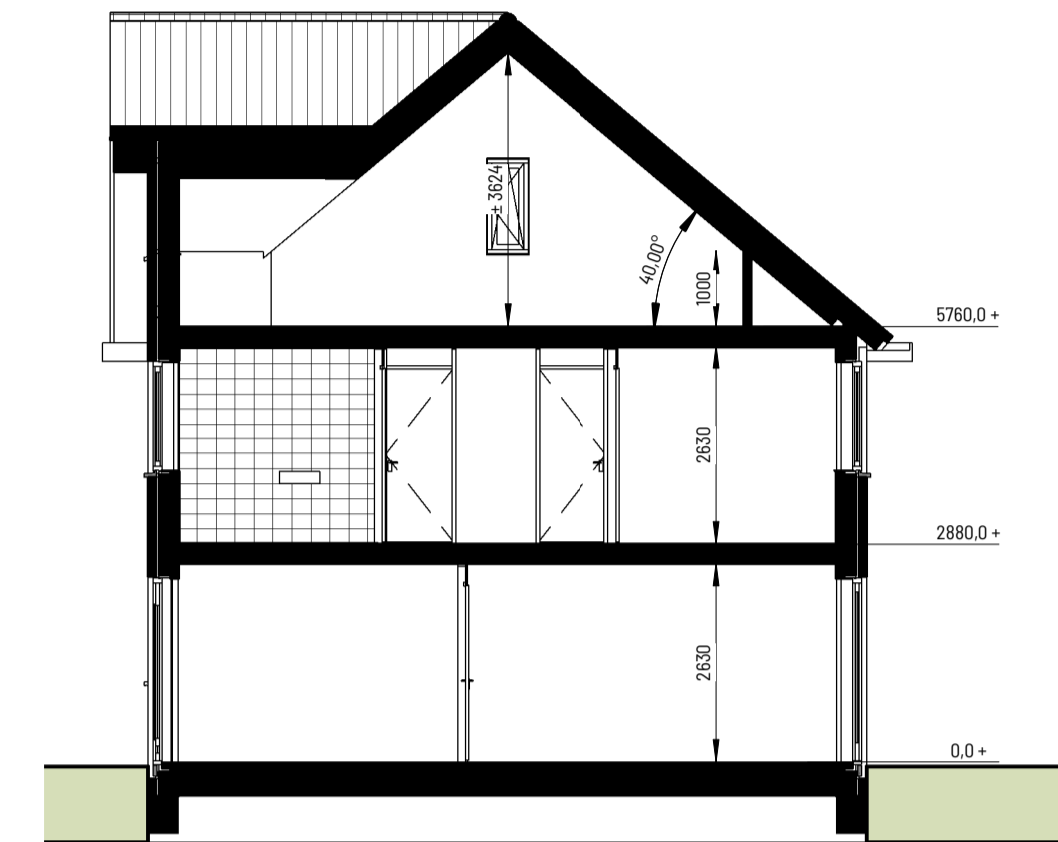
voorgevel
1:100





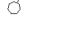

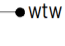
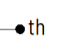
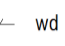

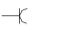
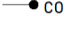
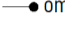
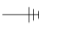







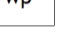
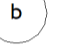



linkergevel
1:100

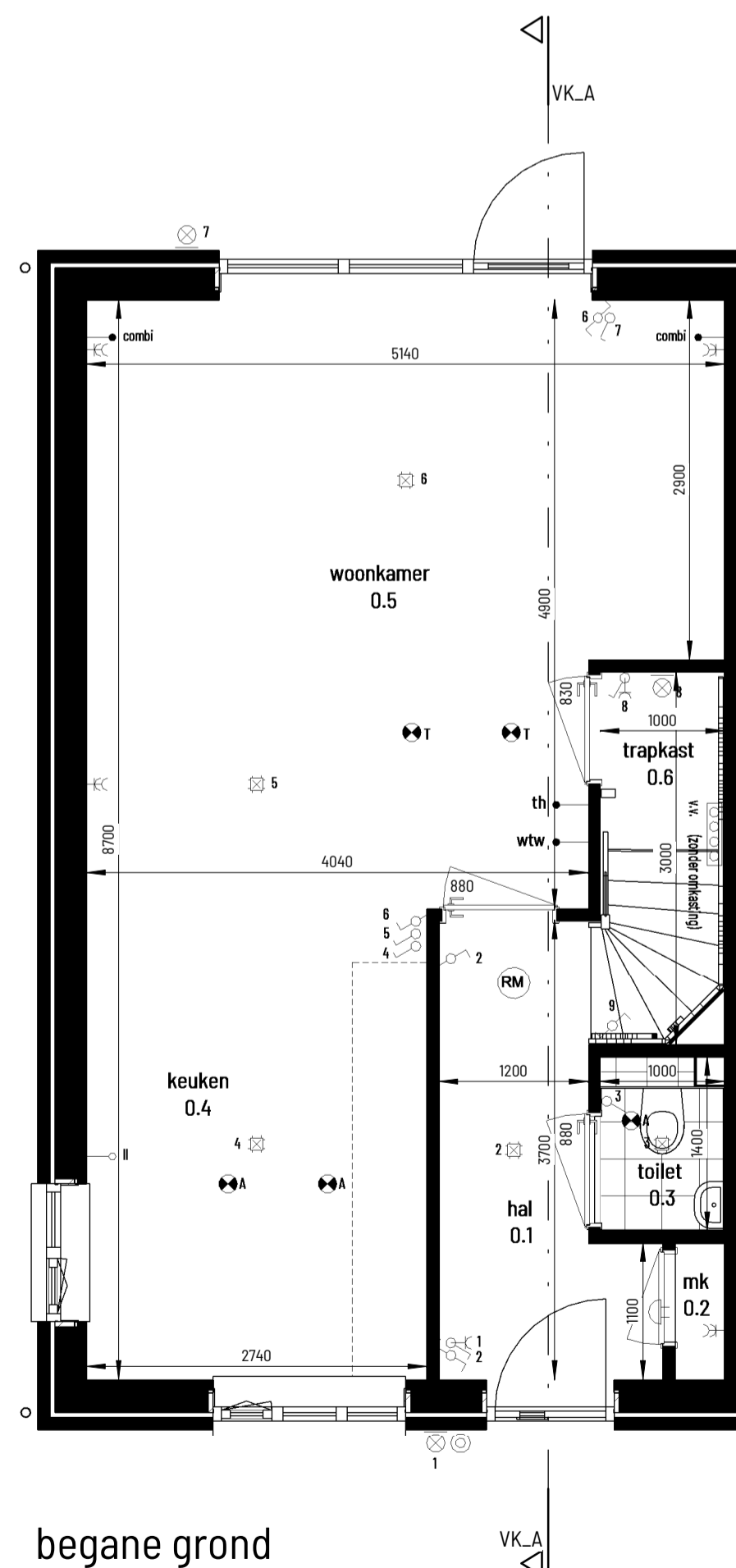


achtergevel
1:100

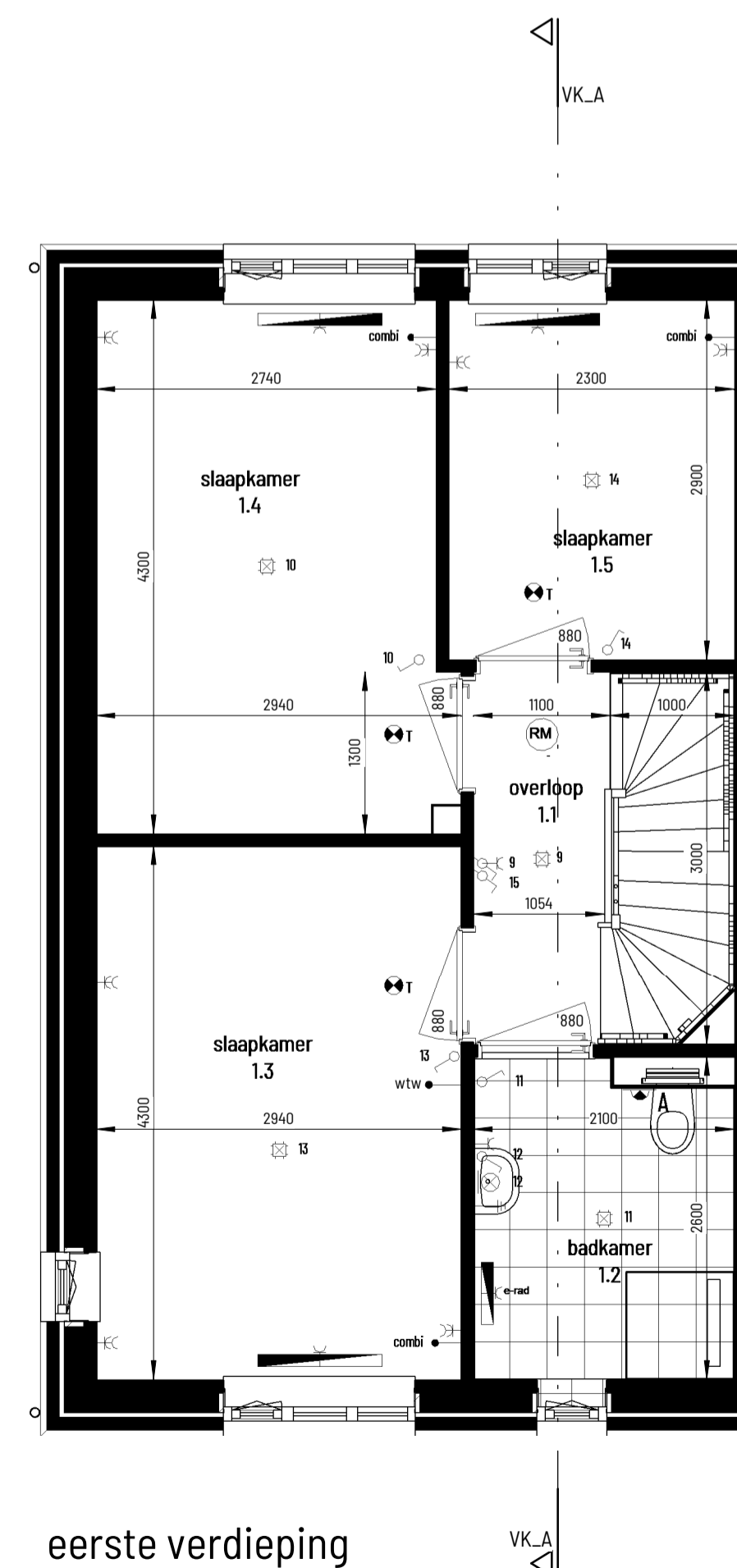


doorsnede A-A
1:100

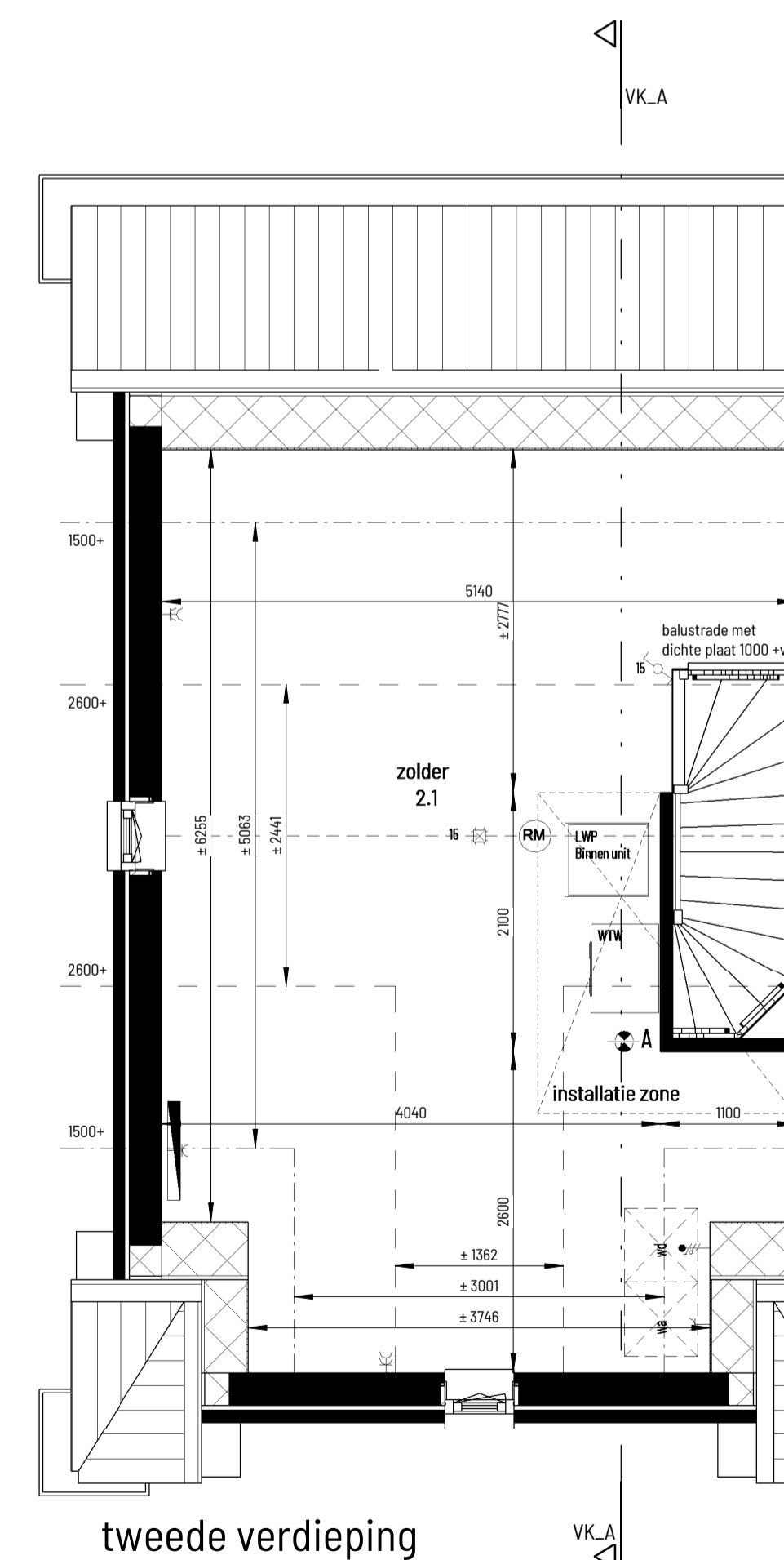
-  plafondlichtpunt
 -  wandlichtpunt
 -  enkelpolige schakelaar
 -  wisselschakelaar
 -  bediening WTW, d.m.v. een Co2 sensor
bediening in woonkamer en ouder slaapkamer
 -  aansluitpunt thermostaat
 -  aansluitpunt wasdroger
 -  dubbele wandcontactdoos
 -  enkele wandcontactdoos
 -  combi kabel COAX/UTP voorzien van klemdeksel
 -  aansluitpunt t.b.v. omvormer (PV)
 -  centraal aard punt (CAP)
 -  rookmelder
 -  afvoerventiel mechanische ventilatie, positie indicatief
 -  wandafvoerventiel mechanische ventilatie, positie indicatief
 -  schel
 -  voordeurbel
 -  radiator
 -  wp
verwarmingstoestel / warmwaterstoestel
 -  boiler
 -  vloerverwarming verdeeler
 -  opstelplaats wasautomaat / wasdroger
 -  deurkozijn + deurbreedte
- maatvoering in de plattegronden zijn 'circa' maten.
leidingen en kanalenverloop conform opgave installateur.
elektra wordt conform opgave installateur uitgevoerd.
aantallen en plaats aansluitingen / schakelaars indicatief.
installaties, alsmede afmeting.
aantal en plaats radiatoren indicatief
deze worden conform opgave installateur uitgevoerd
-  zonnepanelen indicatief, aantal panelen + positie
conform berekening



begane grond
1:50



eerste verdieping
1:50



tweede verdieping
1:50



't Leemer
WOONEN AAN DE GROENE LOPER